

PMA KS 98-2

Multi-function Controller



Automation made easy

PMA's multi-function instrument KS 98-2 combines PID control, process monitoring, sequence control, data logging and alarms.



- Modular automation system in a 1/4-DIN (96 x 96mm) format
- Measure, control, calculate, and record
- Process visualisation, operation, alarm and alerts
- Comprehensive application-oriented functionality
- Graphical programming utility with simulator
- 3.5 " colour touch-screen display
- USB interface on front fascia
- Expandable with modular inputs and outputs
- Ethernet and common fieldbuses

Function blocks from an extensive library can be used to build an application by easily selecting and connecting the blocks graphically using the "ET/KS98"-utility. This method is ideal for creating tailored control, including user interface pages with minimal effort. As a complete solution in a single unit, the KS 98-2 multi-function instrument helps to reduce programming, installation cost and control cabinet space.

Hardware flexibility

- Unprecedented number of I/O in a 1/4-DIN device
- Fully adaptable with up to 12 internal I/O-modules
- Almost every 1/4 DIN Controller can be replaced/upgraded

KS 98-2 offers comprehensive modular input and output options to adapt the unit to the application needs. The unit is optimised to handle the precise measurements required in the process industry via I/O modules supporting a variety of sensor types and also have galvanic isolation. Additional signal conditioners and isolating amplifiers are not necessary in most applications, saving cost and less installation.



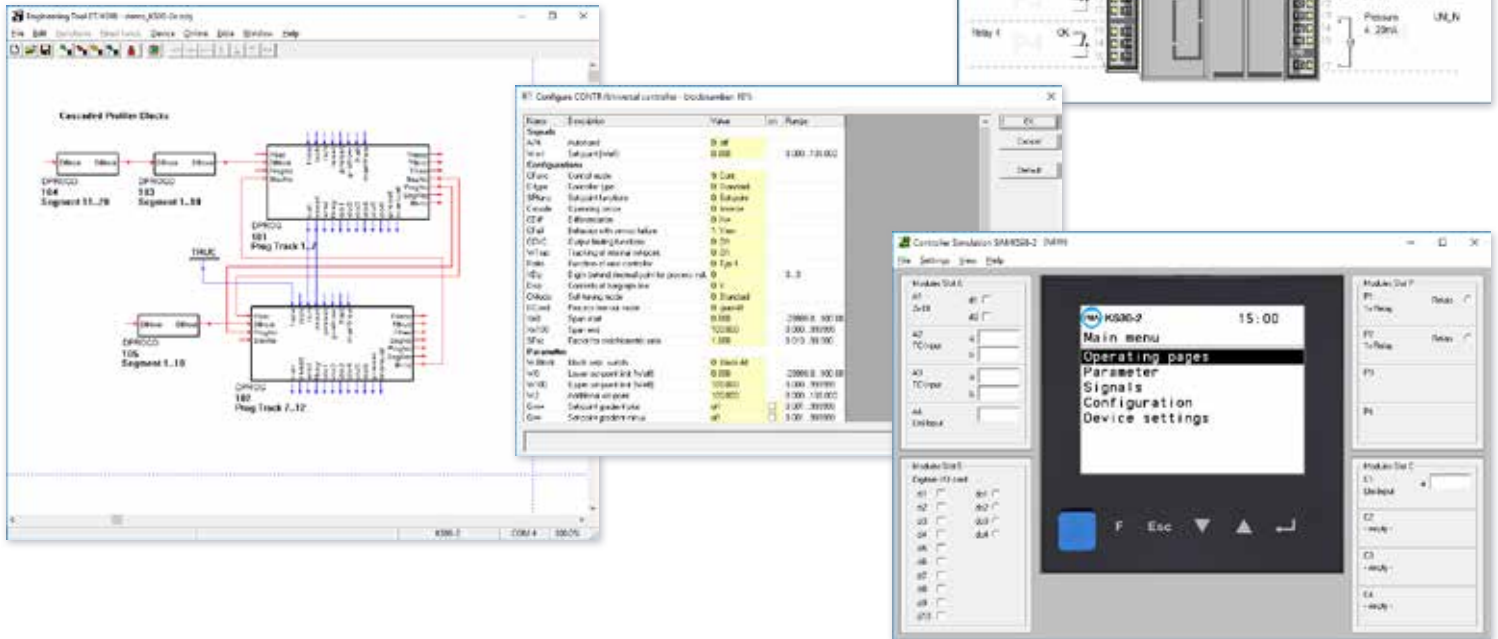
Easy creation of applications for simple and complex tasks

To program the multi-function instrument KS 98-2 for a specific application, the easy to use graphical engineering utility ET/KS98 is provided. A variety of proven function blocks for control, sequencing and calculations can be easily selected and combined as needed for the application. A computer simulation helps to validate and improve the user program in the office before commissioning for live factory equipment.

By selecting functions from the library, the corresponding user screens for operation and setup are added to the user program automatically. Specific overview pages can be built and added to the application.

Programmable functionality

- Free programmable based on proven library functions
- Control, sequencing, computation, logging
- All you need in a single 1/4-DIN instrument
- Reliable sophisticated control strategies proven in many applications available from our function block library



Customisable appearance

- Splash screen
- Customer logo
- Multiple colour sets with
 - foreground colours
 - background colours
 - colours of important values



Ideal for new designs and to provide cost effective functional upgrades for most 1/4-DIN controllers installed in the field

Easy to maintain

- Via front accessible USB
- Via network access
- Using a USB pen



Applications

- Multi loop control
- Sophisticated process control
- Profile control
- Complete automation of small applications

Specifications

Display	320x240 Pixel Colour TFT Display
Operation	Touch with dedicated virtual buttons below the viewing area
Mechanics	¼-DIN panel mount Mounting depth 118mm
IP rating	IP65 (Front)
Inputs	Universal analogue input and 2 digital inputs Modular expandable for various types of input signals (TC, RTD, mA, mV/V, 2-wire transmitters, zirconia probes, 24V logic) (Unit can support up to 12 dual channel I/O extension modules)
Outputs	2 or 4 Relays Modular expandable with various types of output signals (mA, V, SSR, 24V logic) (Unit can support up to 12 dual channel I/O extension modules)
Communication	Ethernet, USB, CAN. Optional modules for RS485, Profibus, Profinet
Data Storage	SD card
Function Library and user program	Logic, Math, Control, Profiling, Alarming, Recording, ... User program can combine up to 2000 function blocks and manage up to 30 control loops

KS 98-2 Basic Unit

Communication Options [D]

- 0 None / for stand alone applications
- 1 Standard interfaces (Ethernet/USB) and CAN for Remote I/O
- 2 Standard interfaces plus RS485 / Modbus
- 3 Standard interfaces plus Profibus
- 4 Standard interfaces plus Profinet

Base Models ⁽¹⁾

- 0 Fast-on terminals
- 1 Screw terminals

Power Supply & Outputs [P]

- 0 90...250V (2 relays, 2 option module slots)
- 1 24V UC (2 relays, 2 option Slots)
- 2 90...250V (4 relays)
- 3 24V UC (4 relays)

Options

- 0 None
- 1 Datalogger

I/O Extensions [B]

- 0 Not fitted
- 1 Digital-I/O extension (10 DI, 4 DO)
- 2 Modular extension (4 option module slots)

Configuration

- 0 Default settings; No option modules installed
- 1 Default settings; Option modules according to additional order line
- 8 Preset to specification; No option modules installed
- 9 Preset to specification; Option modules according to additional order line

Certification

- 0 Standard (CE certified)
- U UL / cUL certified
- D DIN3440 / EN 14597

I/O Extensions [C]

- 0 Not fitted
- 1 Digital-I/O extension (10 DI, 4 DO)
- 2 Modular extension (4 option module slots)

KS98 - 2 - X - X - X - X - X - X - X - X - 0 - 0

(1) Universal Input, 2 digital Inputs, TPS, 2 option module slots

Factory installed Option Modules

Into KS 98-2 in order line above

A98 - F - 0 - 0 - 0 - 0 - 0 - 0 - 0 - 0 - 0 - 0 - 0 - 0 - 0 - 0

Factory installed
Strip P / Segment 3
Strip P / Segment 4
Strip A / Segment 2
Strip A / Segment 3
Strip B / Segment 1
Strip B / Segment 2
Strip B / Segment 3
Strip B / Segment 4
Strip C / Segment 1
Strip C / Segment 2
Strip C / Segment 3
Strip C / Segment 4

Modules and Positions

0 0 0 0 0 0 0 0 0 0 0 0	Not fitted
- - U U U U U U U U U U	Universal input
- - R R R R R R R R R R	Dual Pt100/1000, Ni100/1000, resistance
- - T T T T T T T T T T	Dual Thermocouple, mV, 0/4...20mA
- - V V V V V V V V V V	Dual -50...1500mV (eg. Zirconia probe), 0...10V
- - P P P P P P P P P P	0/4...20mA Input with transmitter power supply
A A A A A A A A A A	Dual DC drive output for SSR
L L L L L L L L L L	Dual linear out (mA/V DC)
B B B B B B B B B B	Dual bipolar Linear Out (-10V...10V)
- - D D D D D D D D D D	Dual digital I/O

Please indicate for all option module slots (12 digits)

Separate module orders

A98 - M - U

Available modules

- U** Universal input
- R** Dual Pt100/1000, Ni100/1000, resistance
- T** Dual Thermocouple, mV, 0/4...20mA
- V** Dual -50...1500mV (eg. Zirconia probe), 0...10V
- P** 0/4...20mA Input with transmitter power supply
- A** Dual DC drive output for SSR
- L** Dual linear out (mA/V DC)
- B** Dual bipolar Linear Out (-10V...10V)
- D** Dual digital I/O

Contact



E-Mail: enquiries@west-cs.com
Website: www.west-cs.co.uk



Address: The Hyde Business Park
Brighton, East Sussex
BN2 4JU
United Kingdom



Telephone: +44 (0)1273 606271
Fax: +44 (0)1273 609990