

# 9000 Series CANbus Digital Output Pressure Transducer



- ▶ High accuracy over wide operating temperature range  
T.E.B.  $\pm 0.2\%$  Span,  $-40^{\circ}\text{F}$  to  $+185^{\circ}\text{F}$  ( $-40^{\circ}\text{C}$  to  $+85^{\circ}\text{C}$ )
- ▶ Excellent Long Term Stability  
 $<0.05\%$  per year, non-cumulative
- ▶ Small size: 25mm diameter, 120mm length
- ▶ Isolated high speed CAN interface - ISO11898
- ▶ Programmable update rate
- ▶ Standard application interface - CANopen DS301 & DSP404
- ▶ In system programmable
- ▶ Self diagnostics - bridge fault detection, hours in service, watchdog, last calibration date, next calibration date
- ▶ Unsurpassed customer support - Rapid Development Kit

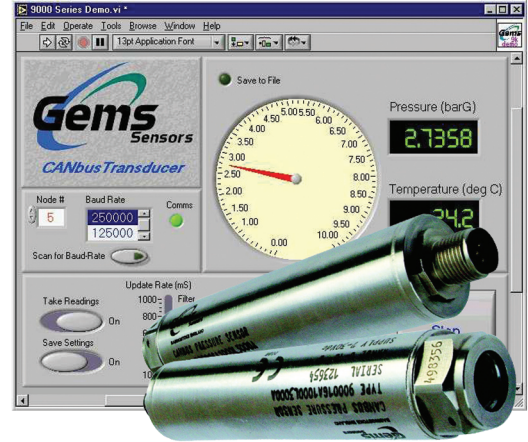
The 9000 CANBUS pressure transducer meets the demands of the test and measurement industry, including automotive and marine applications, with high levels of accuracy over a wide temperature range. The digital output in engineering units eliminates the need for user system calibration.

Designed to have a wide input voltage range, input to output isolation, immunity to noise and self-diagnostics the 9000 is ideal for electrically noisy environments or applications where earthing or grounding can be a problem.

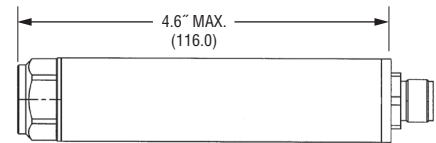
Through the standard CANopen protocol multiple devices can be used on a single bus reducing user cabling.

## Specification

Input	
<b>Pressure Range</b>	0 to 1 - 0 to 690 bar
<b>Proof Pressure</b>	2 x FS (Inconel 1.5 x F.S.)
<b>Burst Pressure</b>	>35 x FS for ranges / 87 psi (6 bar) >15 x FS for ranges $\geq 1450$ psi (100 bar) >4 x FS for ranges $\leq 10007$ psi (690 bar)
<b>Supply Voltage</b>	7-30 VDC
Performance	
<b>Long Term Stability</b>	Zero drift $<0.05\%$ Full range output non cumulative
<b>Accuracy</b>	$\pm 0.1\%$ Full Scale
<b>Total Error Band</b>	$\pm 0.2\%$ Full Scale
<b>Compensated Temperature</b>	$-40^{\circ}\text{F}$ to $+185^{\circ}\text{F}$ ( $-40^{\circ}\text{C}$ to $+85^{\circ}\text{C}$ )
<b>Operating Temperature</b>	$-40^{\circ}\text{F}$ to $+185^{\circ}\text{F}$ ( $-40^{\circ}\text{C}$ to $+85^{\circ}\text{C}$ )
Mechanical Configuration	
<b>Pressure Port</b>	(see table on next page)
<b>Wetted Parts</b>	17-4 PH or Inconel
<b>Electrical Connection</b>	5 pin M12 x 1, cable to IP68, others on request
<b>Enclosure</b>	SS
<b>Vibration</b>	$<0.08\%$ FRO/g 20Hz to 2000Hz, 35g
<b>Shock</b>	Withstands free fall to IEC 68-2-32 procedure 1
<b>Approvals</b>	CE Emissions EN 61000-6-4, Immunity EN 61000-6-2
<b>Weight</b>	$<180$ grams

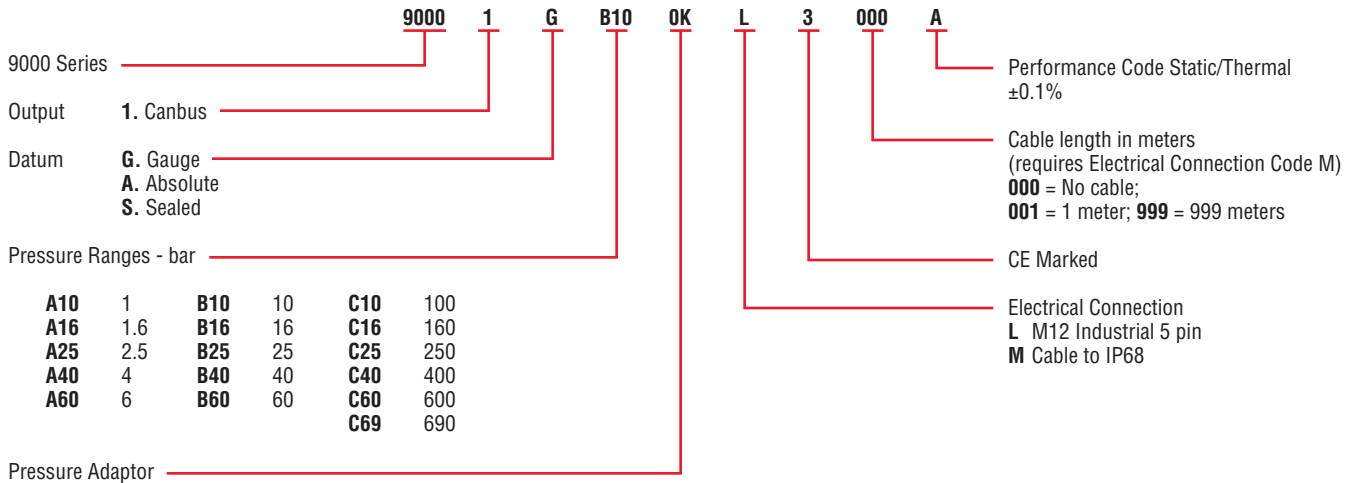


## Dimensions in. (mm)



**How to Order**

Use the **bold** characters from the chart below to construct a product code



Stainless Steel	Inconel	Description
<b>OO</b>	<b>OK</b>	G1/4 internal
<b>AO</b>	<b>AK</b>	G1/4 AT external
<b>KO</b>	<b>KK</b>	7/16-20 UNF-3A external
<b>MO</b>	<b>MK</b>	M14 x 1.5 external
<b>PO</b>	<b>PK</b>	G1/2 AT external
<b>BO</b>	<b>BK</b>	1/4-18 NPT external
<b>GO</b>	<b>GK</b>	1/2-14 NPT external
<b>SO</b>	<b>SK</b>	7/16-20 UNJF-3A, MS 33656F4

**Accessories**

Order Code	Description
557002	Restrictor Kit
499877-1000	Saddle Mounting Kit
562320-02M0	2m, unscreened, 5core, cable - Terminated to M12 male connector
562320-05M0	5m, unscreened, 5core, cable - Terminated to M12 male connector
562321	Rapid Development Kit - including 9V battery, M12 to 9 way D type cable terminated assembly, USB to CAN Interface, Gems start up CD ROM
562293	User manual