

7437, 7438 Series Reset & Non-Reset Totalizer

The 7437 & 7438 Series are our Veeder-Root standard offering for electro-mechanical counters. This highly reliable family of counters can be actuated by AC or DC voltage pulses as specified. The units are tamper resistant and use thermo-stable materials for long term reliability. Most are 5 digit but 6 and 7 digit models are available.



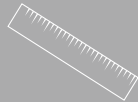
- Broad range of standard AC and DC models
- Base mount and panel mount styles
- High contrast white-on-black figures
- UL recognized; CSA certified
- Tamper resistant construction
- Capable of speeds to 600 counts/minute
- Nonreset and convenient bar-reset models
- Thermo-stable materials used for long term reliability



TIME



COUNT



MEASURE

8:43

DISPLAY

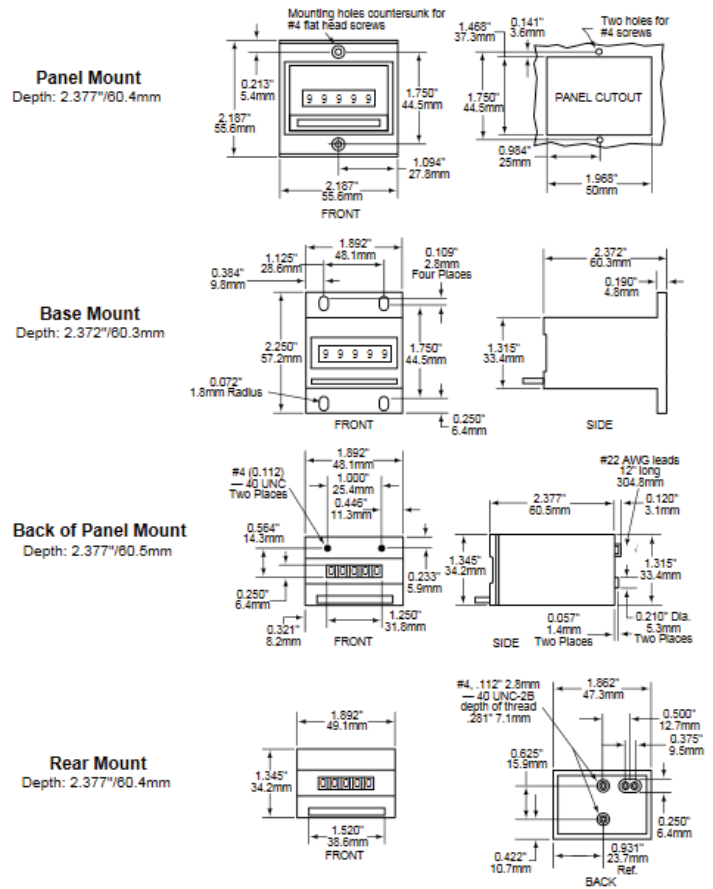
7437, 7438 Series Reset & Non-Reset Totalizer

ESVR 09082016

SPECIFICATIONS

SPEED	600 cpm
MINIMUM COUNT PULSE TIMING	50 ms on-time and off-time
VOLTAGE	Allowable variation is $\pm 10\%$ or 10 volts, whichever is limiting; nonreset counter with 115 VAC coil has allowable variation of 95 to 125 VAC
POWER CONSUMPTION	5 watts on AC, 1.5 watts on DC
MAXIMUM ON TIME	DC Models: No limit. Coil can be continuously energized without damage. AC Models: With 50% duty-cycle, 10 minutes maximum
NUMBER OF FIGURES	Reset: 5 Nonreset: 5, 6, 7
SIZE OF FIGURES	0.160" high x 0.110" wide (4.1 mm x 2.8 mm) with 0.023" (0.6 mm) line width on 5 and 6 figure models
COLOR OF FIGURES	White on Black
OPERATING TEMPERATURE RATING	+32° to +120°F (0° to +49°C).
MOUNTING	Base Mount Rear Mount Panel Mount
CONNECTIONS	Wire leads, 12", #22 AWG
CONSTRUCTION	Wheels, Pinions, Reset mechanism: Acetal resin Frame: Glass filled acetal resin Shafts, Spring: Stainless steel Clapper: Nickel plated SAE 1010 steel Case: Modified polyphenylene oxide
WEIGHT	4 oz. (113.4 g)

DIMENSIONS



ORDERING INFORMATION

743785-001	Base mount, 5 figures, 115 VAC, nonreset, UL/CSA
743785-002	Base mount, 5 figures, 230 VAC, nonreset, UL/CSA
743785-003	Base mount, 5 figures, 24 VAC, nonreset, UL/CSA
743785-004	Base mount, 5 figures, 115 VDC, nonreset, UL/CSA
743785-006	Base mount, 5 figures, 24 VDC, nonreset, UL/CSA
743785-007	Base mount, 5 figures, 12 VDC, nonreset, UL/CSA
743795-101	Back-of-panel mount, 5 figures, 115 VAC, nonreset, UL
743785-201	Panel mount, 5 figures, 115 VAC, nonreset, UL/CSA
743795-206	Panel mount, 5 figures, 24 VDC, nonreset, UL
743796-001	Base mount, 6 figures, 115 VAC, nonreset, UL
743796-006	Base mount, 6 figures, 24 VDC, nonreset, UL
743797-001	Base mount, 7 figures, 115 VAC, nonreset, UL
743895-011	Base mount, 5 figures, 115 VAC, reset, UL
743895-017	Base mount, 5 figures, 12 VDC, reset, UL
743885-211	Panel mount, 5 figures, 115 VAC, reset, UL/CSA
743885-216	Panel mount, 5 figures, 24 VDC, reset, UL/CSA
743895-416	Rear mount, 5 figures, 24 VDC, reset, UL

Special Variations Available. Please consult factory.

1.800.390.6405

www.veeder-rootcounters.com

customer.service@sptech.com

2100 West Broad Street
Elizabethtown, NC 28337